

WELCOME

to the

U.S. Highway 12

Draft Environmental Impact Statement

Public Hearing



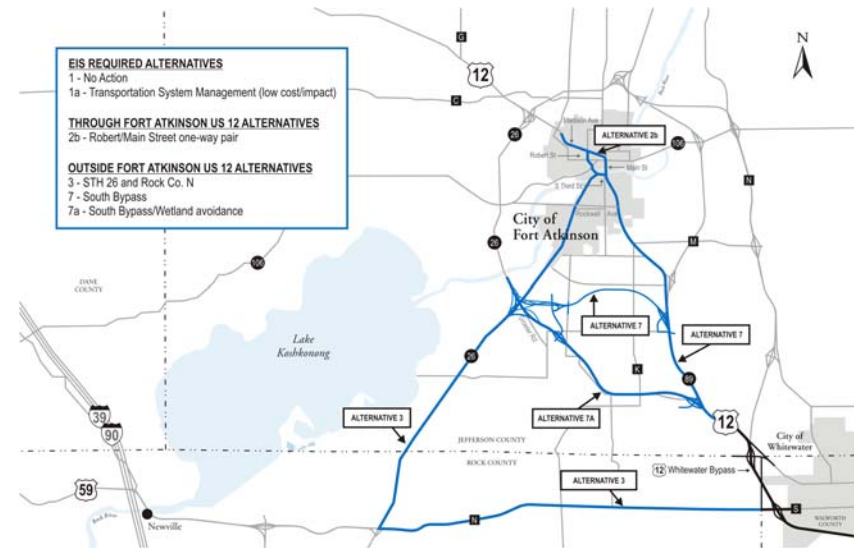
Purpose Statement

- Improve current and future regional traffic flow to serve inter-state and inter-regional travelers.
- Improve safety for users including pedestrians, bicyclists and motor vehicles.
- Accommodate heavy traffic volumes, including heavy trucks, so that the roadway meets the role of a Corridors 2020 and National Highway System route.
- Improve the Level of Service of US 12 in the study area.



Alternatives Studied

Alternative 1	No Build
Alternative 1a	Transportation System Management
Alternative 2b	One-way pair, on existing US 12
Alternative 3	Rock County Highway N
Alternative 7	Near south bypass
Alternative 7a	Far south bypass



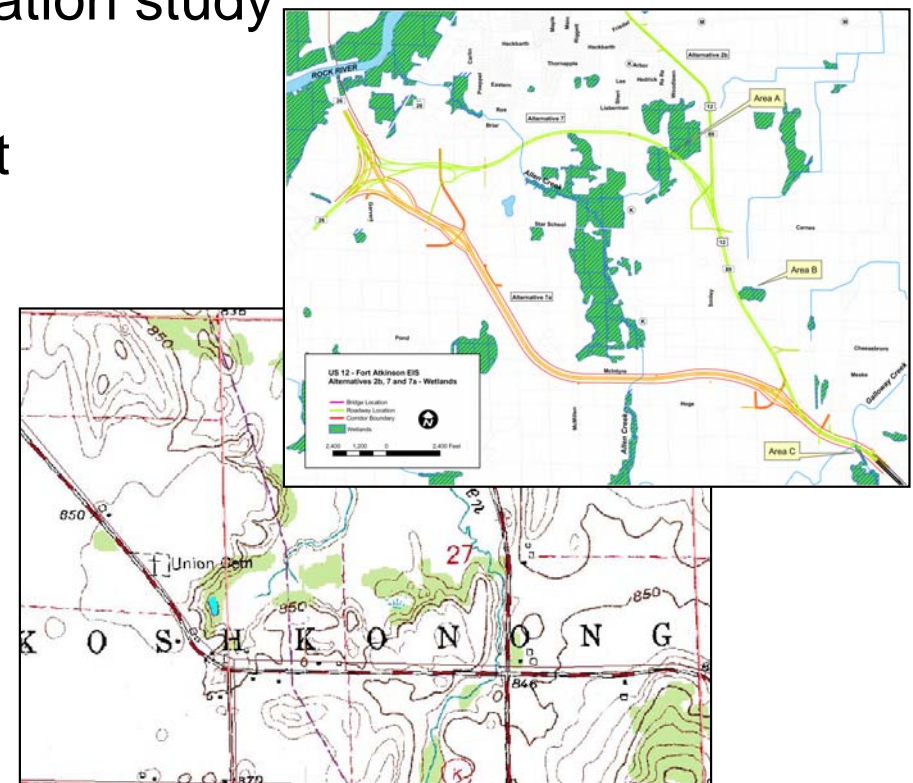
Impact Evaluation

- Economics
- Community
- Business
- Agriculture
- Wetlands
- Streams/Floodplains
- Woodland/Upland Habitat
- Air Quality
- Traffic and Construction Noise
- Historic Structures and Sites
- Archaeology
- Hazardous Substances
- Aesthetics
- Cost



Technical Studies

- Home and business relocation study
- Air quality assessment
- Traffic impact assessment
- Noise impact assessment
- Archaeological surveys
- Historical surveys
- Hazardous materials investigations
- Cost analyses
- Habitat Surveys
- Wetland delineations
- Agricultural impact assessments



Alternative Evaluation

- Is able to move traffic
- Has public support
- Is compatible with local, state and national plans
- Potential impacts are deemed acceptable
(benefits outweigh the costs)



Who makes the final decision?

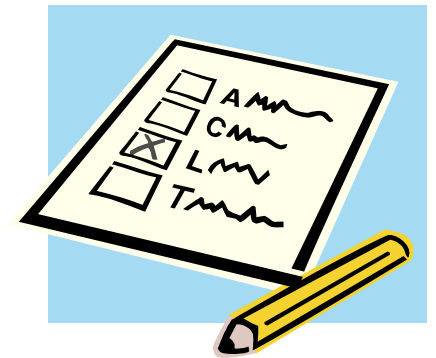
After public comments are considered:

- WisDOT Southwest Region recommends the preferred alternative;
- FHWA approves it, and if it is one of the build alternatives;
- the Legislature and Governor must provide funding through enumeration of major project.



Next Steps – Be Heard!

- Voice your opinions tonight
 - oral testimony
 - private testimony with court reporter
 - written comment using comment sheets provided
- Go home and think about it
 - submit your written comments no later than December 14, 2005
 - Use contact information provided in the handout



Next Steps

- WisDOT will review, compile and respond to substantive comments and use them to help determine a preferred alternative
- Final EIS will present the preferred alternative and will expand any studies that need additional detail or in-depth studies



Ground Rules for Giving Oral Testimony

- Fill out a speaker's registration slip from the Handout Packet and submit it prior to speaking.
- Limit your comments to 3 minutes to give everyone a chance to speak. If you need to say more, feel free to put it in writing. It will be entered into the record.

