

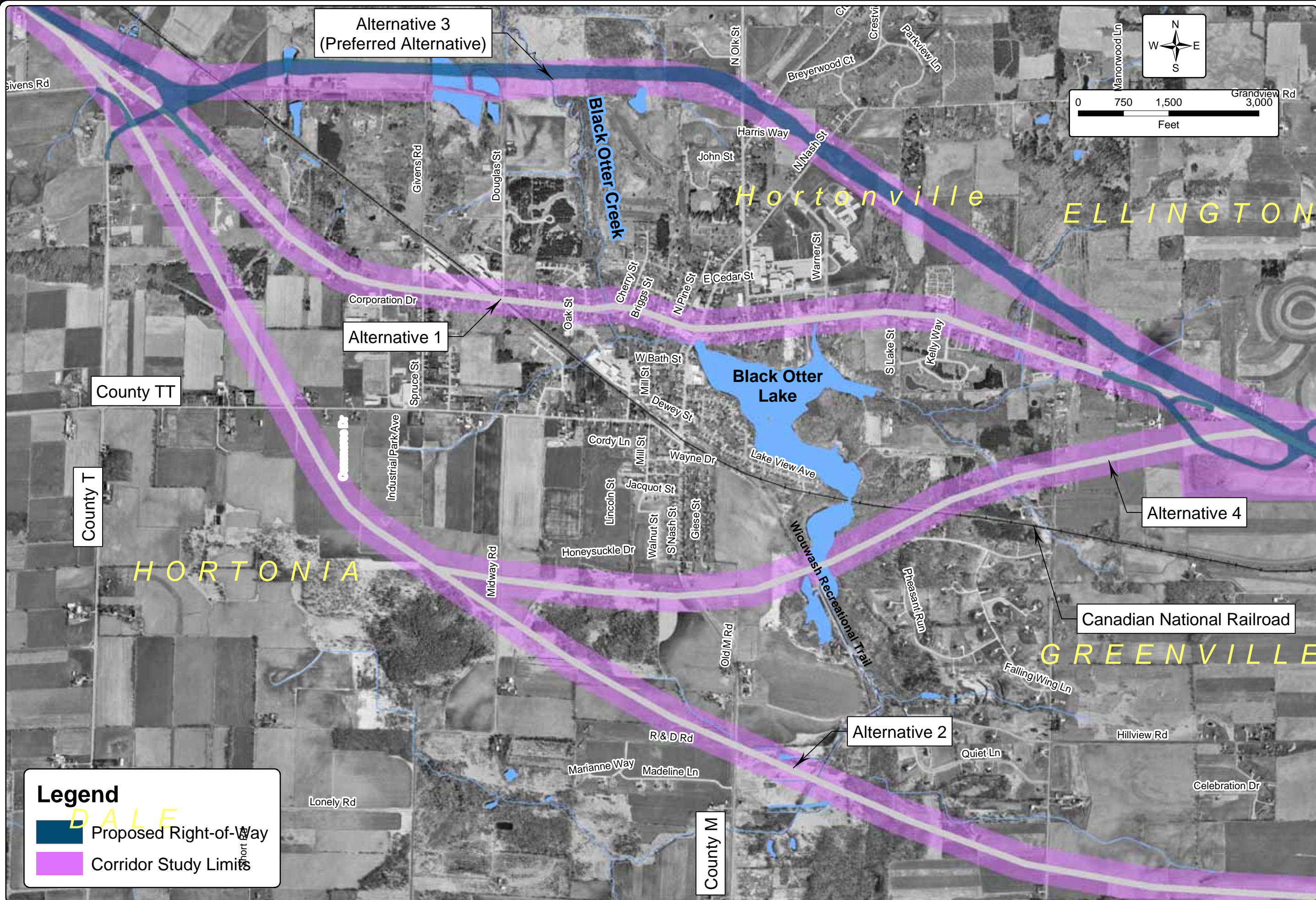
Legend

- Proposed Right-of-Way
- Corridor Study Limits

WIS 15 PREFERRED ALTERNATIVE - OPTION A AND ALTERNATIVE 3

US45 TO GIVENS ROAD
 WISCONSIN DEPARTMENT OF TRANSPORTATION
 OUTAGAMIE COUNTY, WISCONSIN

FIGURE ES-1.1
 1-089.164



Alternative 3
(Preferred Alternative)

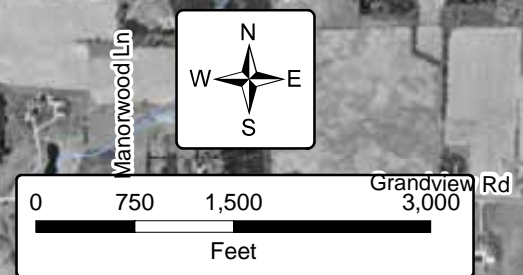
Alternative 1

Alternative 4

Alternative 2

Canadian National Railroad

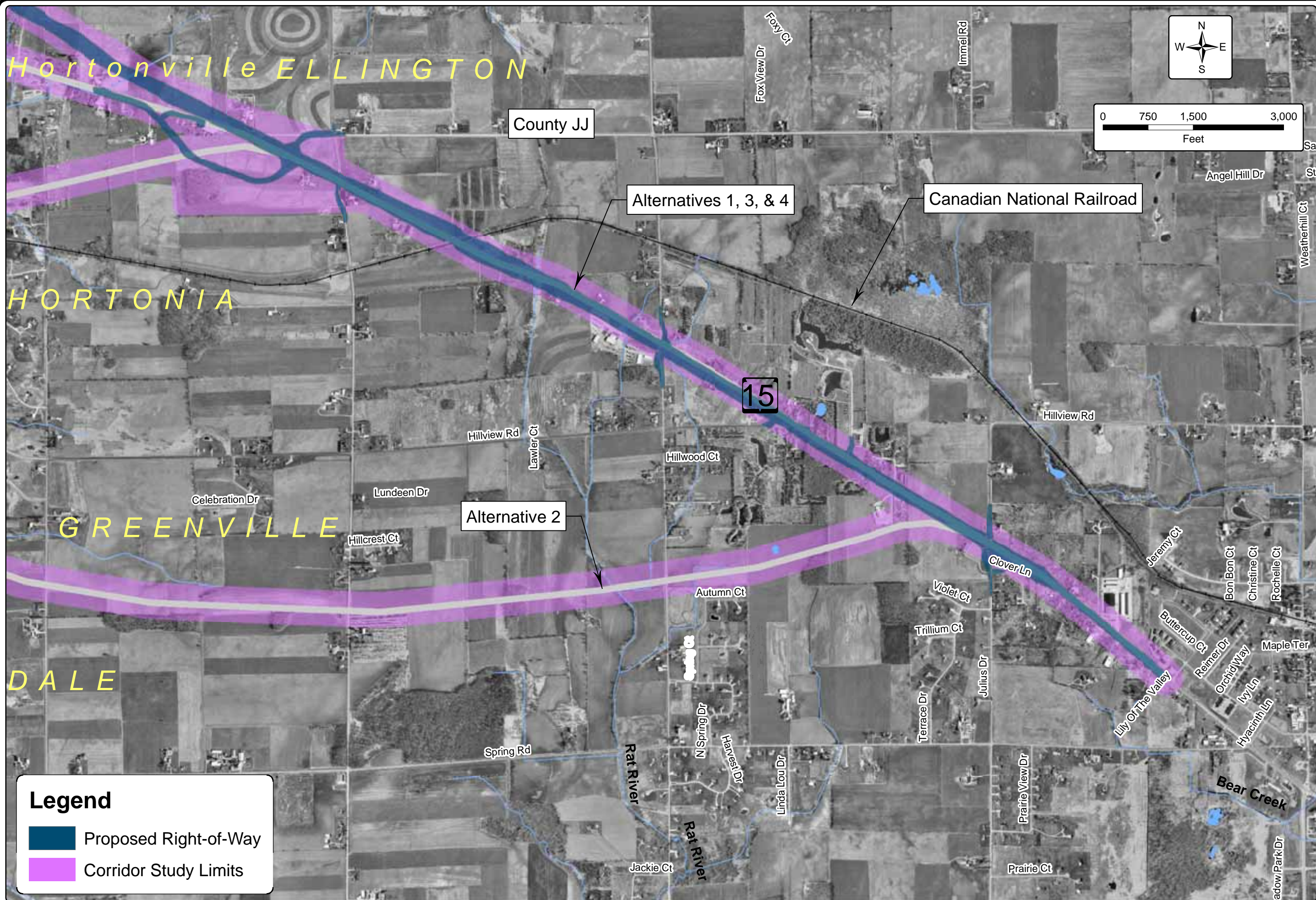
Legend
 Proposed Right-of-Way
 Corridor Study Limits



WIS 15 PREFERRED ALTERNATIVE - OPTION A AND ALTERNATIVE 3

GIVENS ROAD TO COUNTY ROAD JJ
 WISCONSIN DEPARTMENT OF TRANSPORTATION
 OUTAGAMIE COUNTY, WISCONSIN

FIGURE ES-1.2
 1-089.164



Legend

- Proposed Right-of-Way
- Corridor Study Limits

WIS 15 PREFERRED ALTERNATIVE - OPTION A AND ALTERNATIVE 3

COUNTY ROAD JJ TO JULIUS DRIVE
 WISCONSIN DEPARTMENT OF TRANSPORTATION
 OUTAGAMIE COUNTY, WISCONSIN

FIGURE ES-1.3
 1-089.164