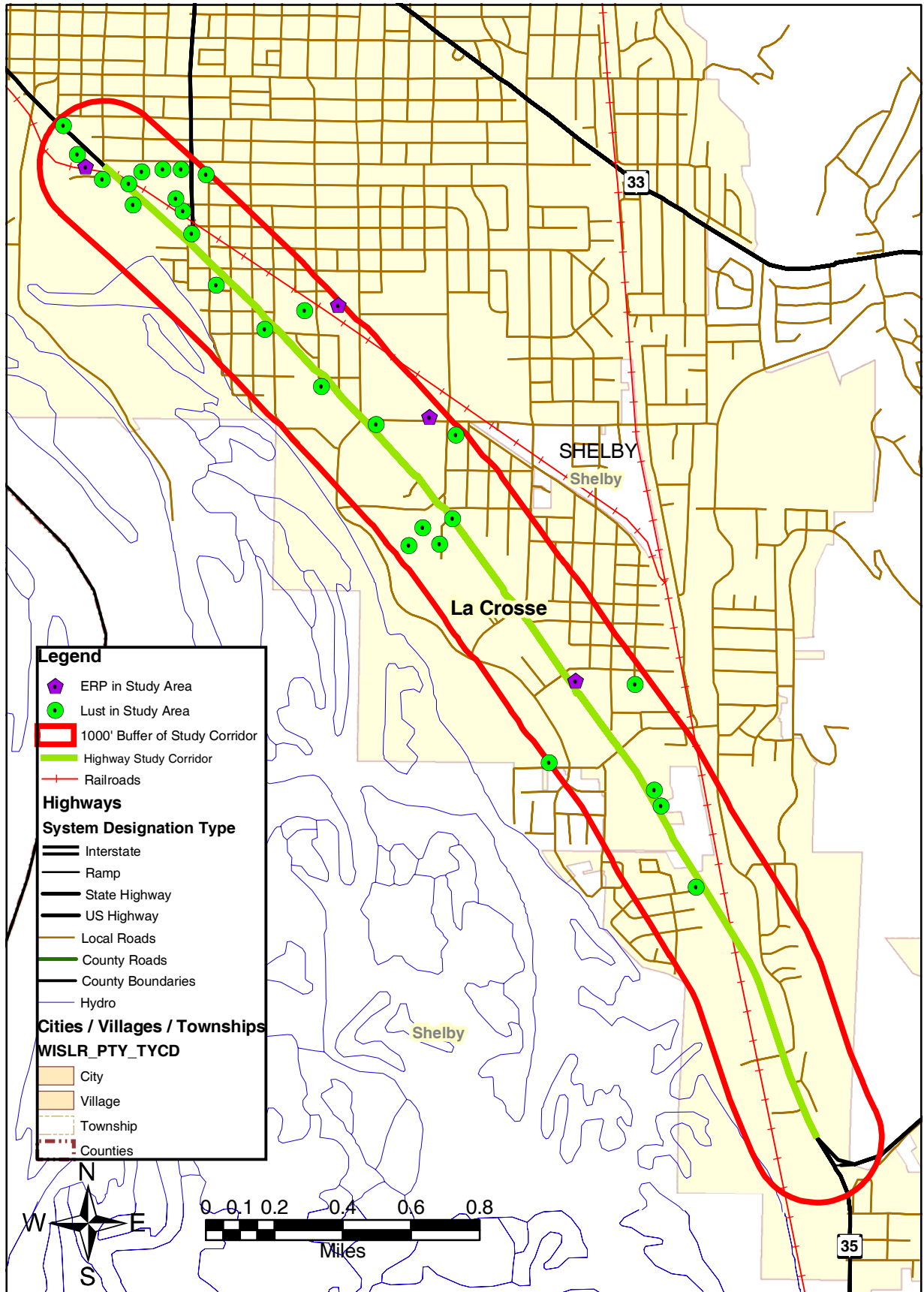


---

## **Appendix C**

### Hazardous Materials Sites

# Enviromental Study Area



# *LUST Data Detail*

DNR BRRTS ID Site Name

---

332220112	
332098325	PEPSI COLA OF LA CROSSE
332001127	KWIK TRIP #826
332000093	SPUR STATION SITE - LA CROSSE
332001394	KWIK TRIP #773
332000819	STATE OFFICE BUILDING
332000455	AFFORDABLE REPAIR
332000874	DAIRYLAND POWER SERVICE
332000114	WI DOT SIGN SHOP
332000675	INLAND PRINTING
332000552	"KERR-MCGEE
332000102	METZ BAKERY
332001351	PEPSI COLA OF LACROSSE
332104109	"TRUSSONI
332001356	FORMER STUKINS BLDG
332000696	BADGER CORRUGATING
332000820	LUTHERAN HOSPITAL
332153280	HINTGEN ELEMENTARY SCHOOL
332188337	PEPSI COLA BOTTLING CO OF LA CROSSE
332001133	SORGE INC
332202363	GUnderson Lutheran Med Cntr Founders Building
332186049	Pepsi Bottling 2323
332000452	LWK Auto Sales
332350146	GAS STATION - FORMER
332001277	EDS SERVICE STATION
332111146	FLEMING CO MONASTARY SITE
332001440	BETHANY ST JOSEPH CARE CENTER

## *ERP Site Detail*

<i><u>DNR BRRTS ID</u></i>	<i><u>Site Name</u></i>
232000400	
232000413	LUTHERAN HOSPITAL-PSYCHIATRIC
232000296	LACHMAN PROPERTY
232307534	SAFTY -KLEEN LA CROSSE SERVICE CENTER