

# Zoo Interchange Corridor Study

**Public Information Meeting  
October 27<sup>th</sup> and 30<sup>th</sup> 2008**



# Purpose of meeting

- ❑ Project update
- ❑ Your chance to provide input



# Presentation agenda

- ❑ Work we've completed to date
- ❑ What you'll see today
- ❑ What is yet to come



# Work completed to date

## Study limits

- East – I-94 at 70<sup>th</sup> Street
- West – I-94 at 124<sup>th</sup> Street
- South – I-894/US 45 at Lincoln Avenue
- North – US 45 at Burleigh Street



# Work completed to date

## Purpose and need

1. *Safety*
2. *Congestion*
3. *Aging infrastructure*
4. *Outdated design*
5. *Key link for local, state, national traffic*



# Work completed to date Community Outreach

- January workshops
- May public meetings
- Neighborhood meetings
- Door-to-door campaign
- State Fair
- Meetings with business and community based organizations
- Newsletters to mailing list of 14,000+



# Work completed to date

## Community Outreach

- Key concerns from public information meetings:
  - Congestion
  - Build now to accommodate future growth and development
  - Protect the environment and neighborhoods
  - Do it right the first time



# Work completed to date

## Community Outreach

- Key concerns of neighbors:
  - Noise
  - Property impacts
  - Traffic on local roads



# Work completed to date

## Business and labor opportunities

- DBE Labor and business committee
  - Primary focus: evaluate, identify and create opportunities for minority firms and employees
  - Steering committee met throughout summer
  - Coordination with other large WisDOT projects



# Work completed to date

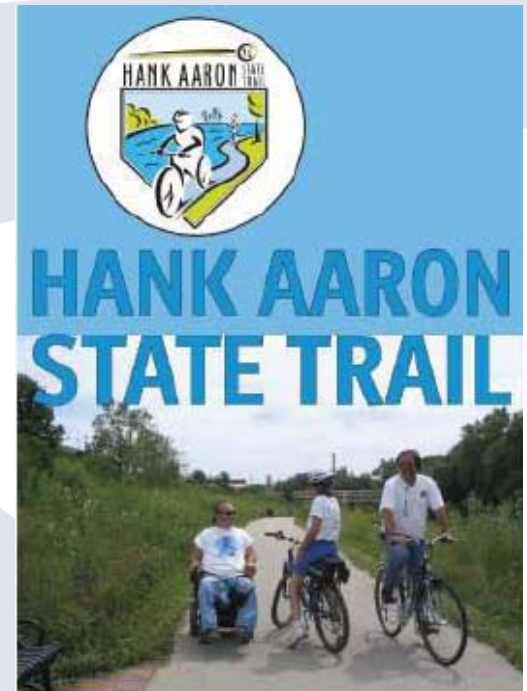
## Environmental Impact Statement

- Completed most of the required data gathering
- Meeting regularly with the WDNR, MMSD, local planners and review agencies
- Completed Purpose and Need
- Work continues on alternative descriptions and affected environment description



# Work completed to date Hank Aaron State Trail

- Plan: Extension Open in 2010
  - WisDOT work closely with WDNR
  - Menomonee Valley to 94<sup>th</sup> Place
- Extension from 94<sup>th</sup> to 124<sup>th</sup>
  - It will be open in 2016



# Work completed to date West Suburban Traffic Impact Analysis (TIA)

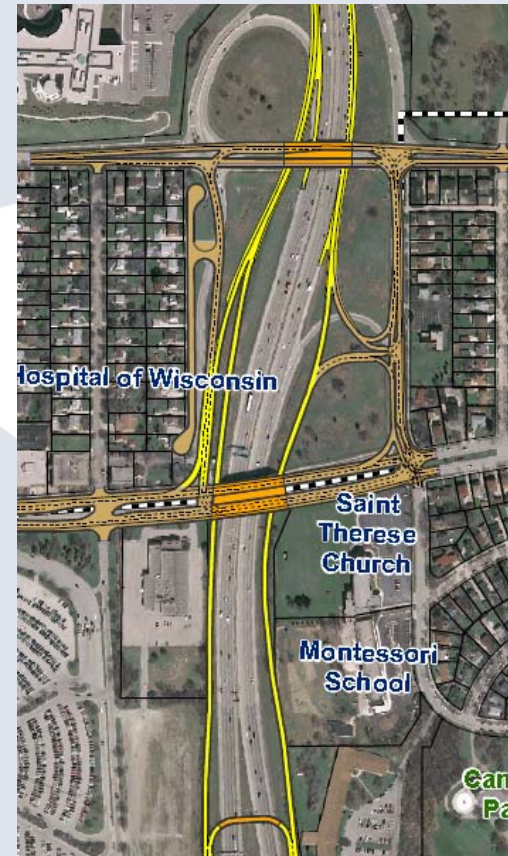
- Coordination with Zoo Interchange
- Advisory Committee meeting
- Early December Public Information Meeting



# Work completed to date

## Alternative development

- Alternatives developed
  - Replace in kind
  - Three “spot improvement” alternatives
  - Three “modernization” alternatives



# Work completed to date

## Alternative analysis

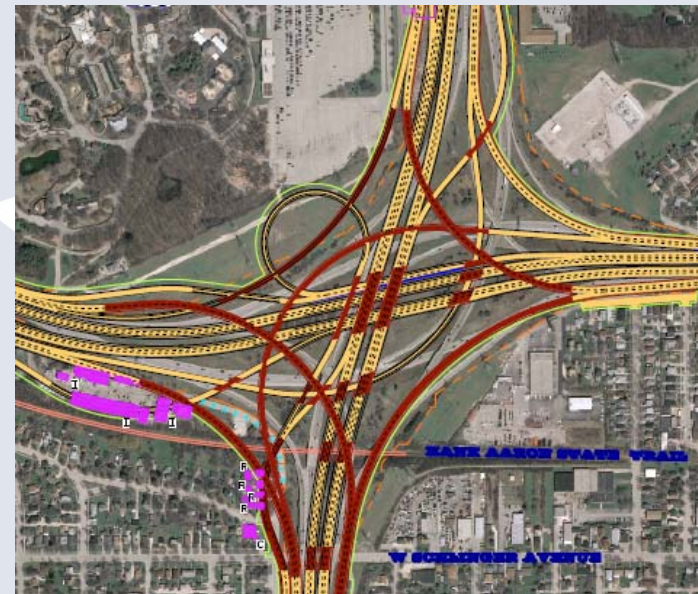
- Alternatives no longer under consideration
  - Spot Improvements
- Alternatives carrying forward
  - Modernization alternatives
  - Replace in kind



# Work completed to date

## Alternative refinement - modernization

- Number of lanes
  - Six-lane freeway
  - Eight-lane freeway
- Refined core interchange
  - with and without EB IH 94 access to Greenfield Avenue
- Unique alternatives on each leg



# Work completed to date

## Alternative analysis - modernization

- Traffic analysis
  - Congestion
  - Safety
- Impact to area
  - Real estate (acreage)
  - Relocations



# Presentation agenda

- ❑ Work we've completed to date
- ❑ **What you'll see today**
- ❑ What is yet to come



# What you'll see today

- Refined alternatives
  - North – M1 and M3
  - South – M2
  - East – M1 and M3
  - West – M1 and M3
  - Core of the interchange
- Traffic operations
  - Six lanes
  - Eight lanes



# Presentation agenda

- Work we've completed to date
- What you'll see today
- What is yet to come**



# What is yet to come

- Continued refinement of alternatives
- Outreach to neighborhoods, business, organizations
  - Needs in the corridor
  - Concerns being addressed
- Continued environmental analysis and completion of the draft environmental impact statement



# What is yet to come

- 2009
  - Draft environmental Impact Statement (DEIS)
  - Engineering analysis
- 2010-2012
  - Final design
  - Real estate/utility
- 2012-2016
  - Reconstruct the interchange



# We need your input...

- What do you like about what you see?
- What do you not like about what you see?
- What are we missing?



# Zoo Interchange Project Contact:

- Donna Brown, Project Director  
Phone: (262) 548-8713  
E-mail: donna.brown@dot.state.wi.us
- Tracy Gilliam, Project Supervisor  
Phone: (262) 548-6444  
E-mail: tracy.gilliam@dot.state.wi.us
- Project Web site: [www.sefrefreeways.org](http://www.sefrefreeways.org)
- Manojoy Nag, Mega Project Manager  
Phone: (262) 548-6423  
E-mail: manojoy.nag@dot.state.wi.us
- Jim Liptack, Project Manager  
Phone: (262) 548 –8662  
E-mail: jim.liptack@dot.state.wi.us
- Zoo hotline number: (262-548-6421)



# Zoo Interchange Corridor Study

## Wisconsin DOT

