

Legend

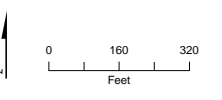
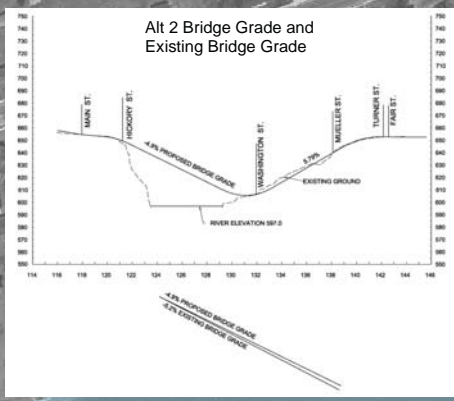
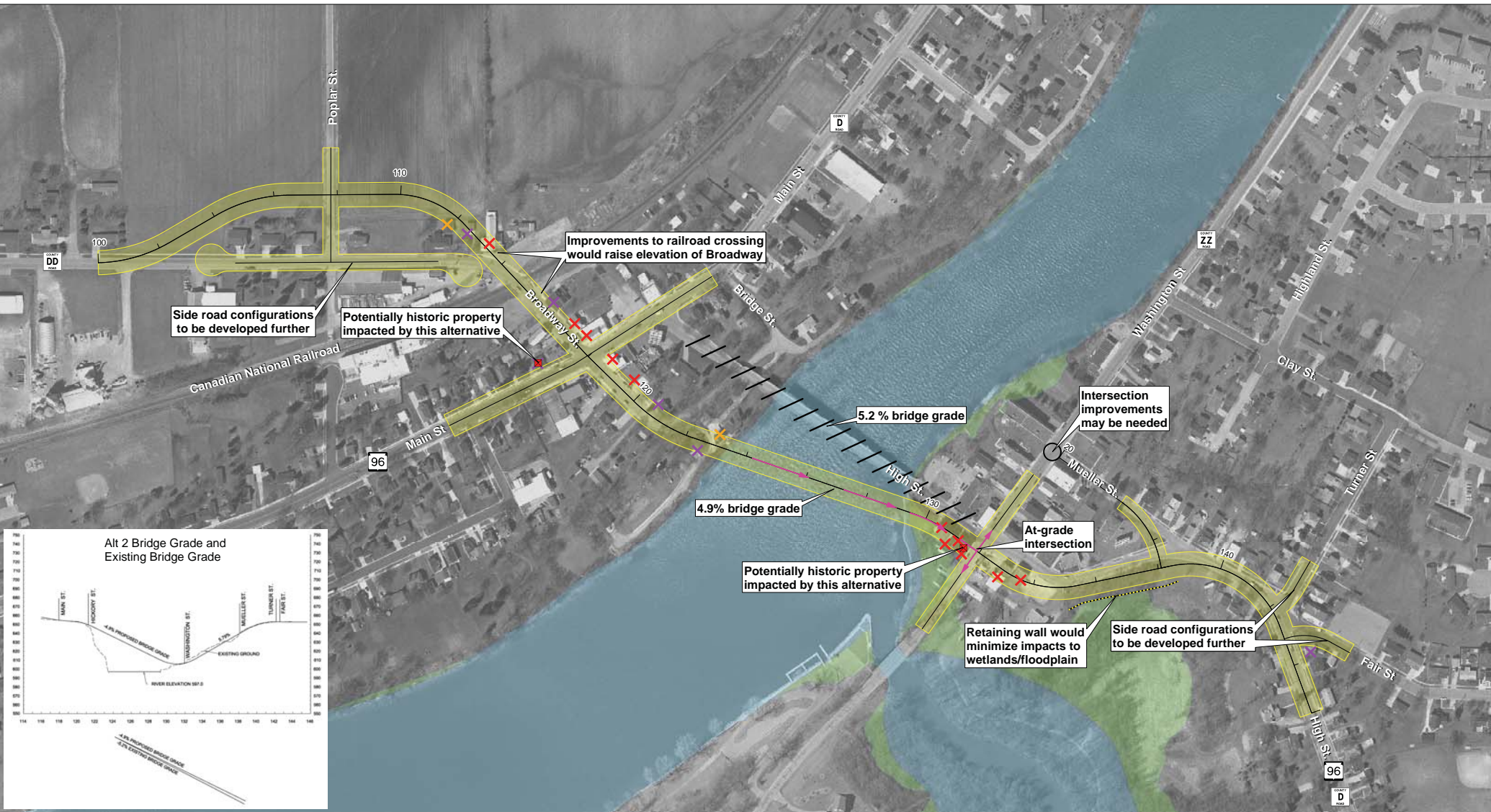
- Direction of travel to access Washington Street
- Potential Commercial Relocation
- Potential Outbuilding Relocation
- Potential Residential Relocation
- Proposed Roadway*
- Floodplain/Wetland
- Floodway
- Potential Retaining Wall

Note:

1. * The corridor shown depicts approximate route locations and is not intended to portray proposed right of way limits. The corridor width shown for the alternatives is approximate and may change as the study progresses.
2. Potential relocations associated with intersection improvements will be determined after tonight's meeting.

Remaining Alternatives
 Alternative 1 (Formerly 5B)
 Bridge Over Washington Street
 May 2009





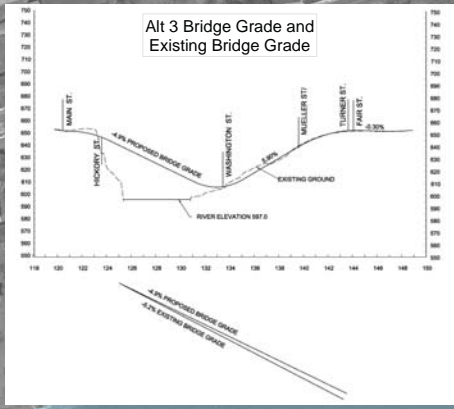
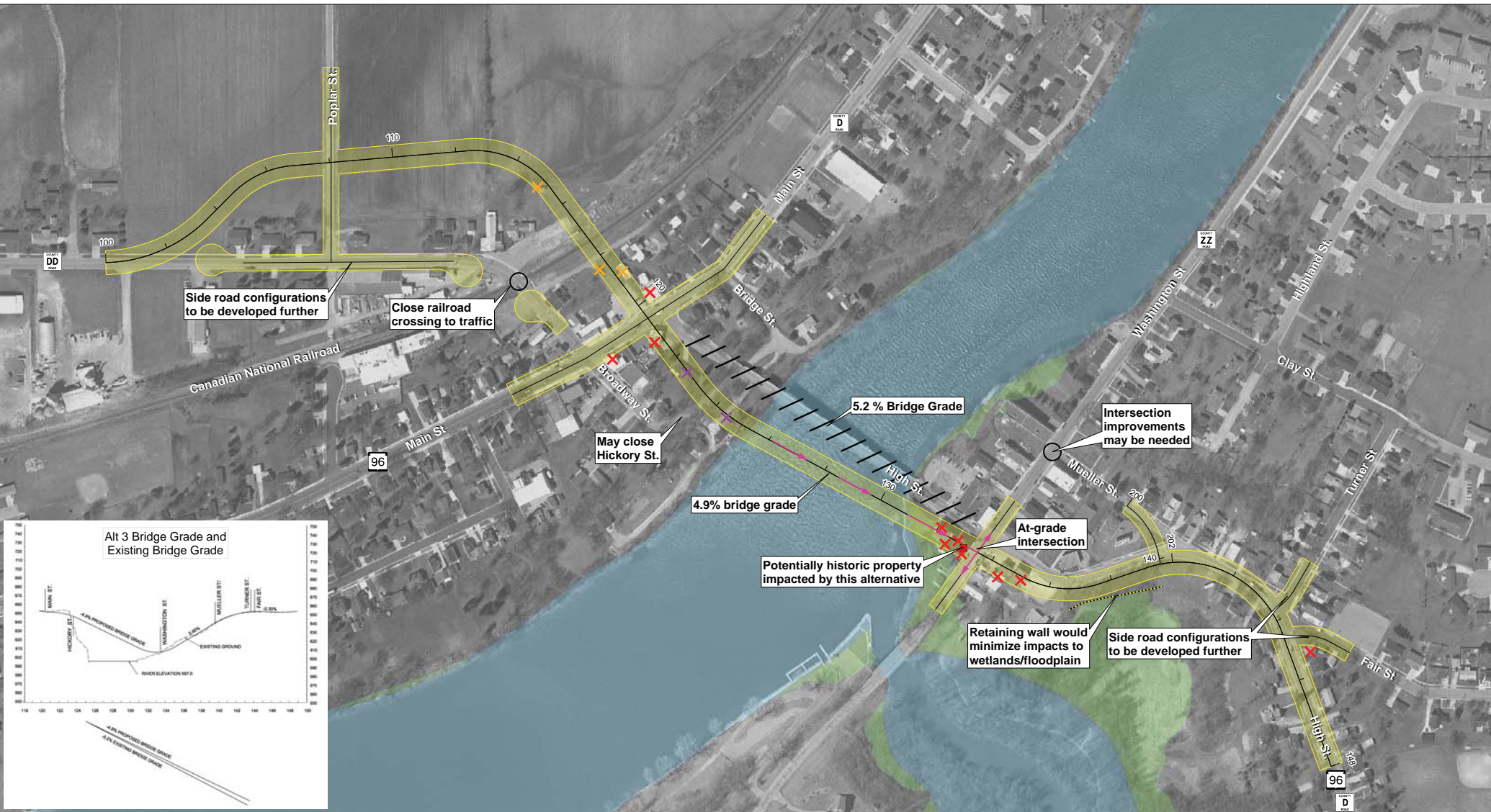
- Legend**
- Direction of travel to access Washington Street
 - Potential Commercial Relocation
 - Potential Outbuilding Relocation
 - Potential Residential Relocation
 - Proposed Roadway*
 - Floodplain/Wetland
 - Floodway
 - Potential Retaining Wall

Note:

1. * The corridor shown depicts approximate route locations and is not intended to portray proposed right of way limits. The corridor width shown for the alternatives is approximate and may change as the study progresses.
2. Potential relocations associated with intersection improvements will be determined after tonight's meeting.

Remaining Alternatives
 Alternative 2 (Formerly 4A)
 At-Grade Intersection with Washington Street
 May 2009





Legend

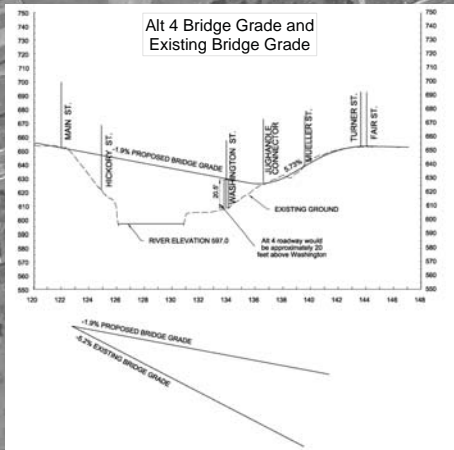
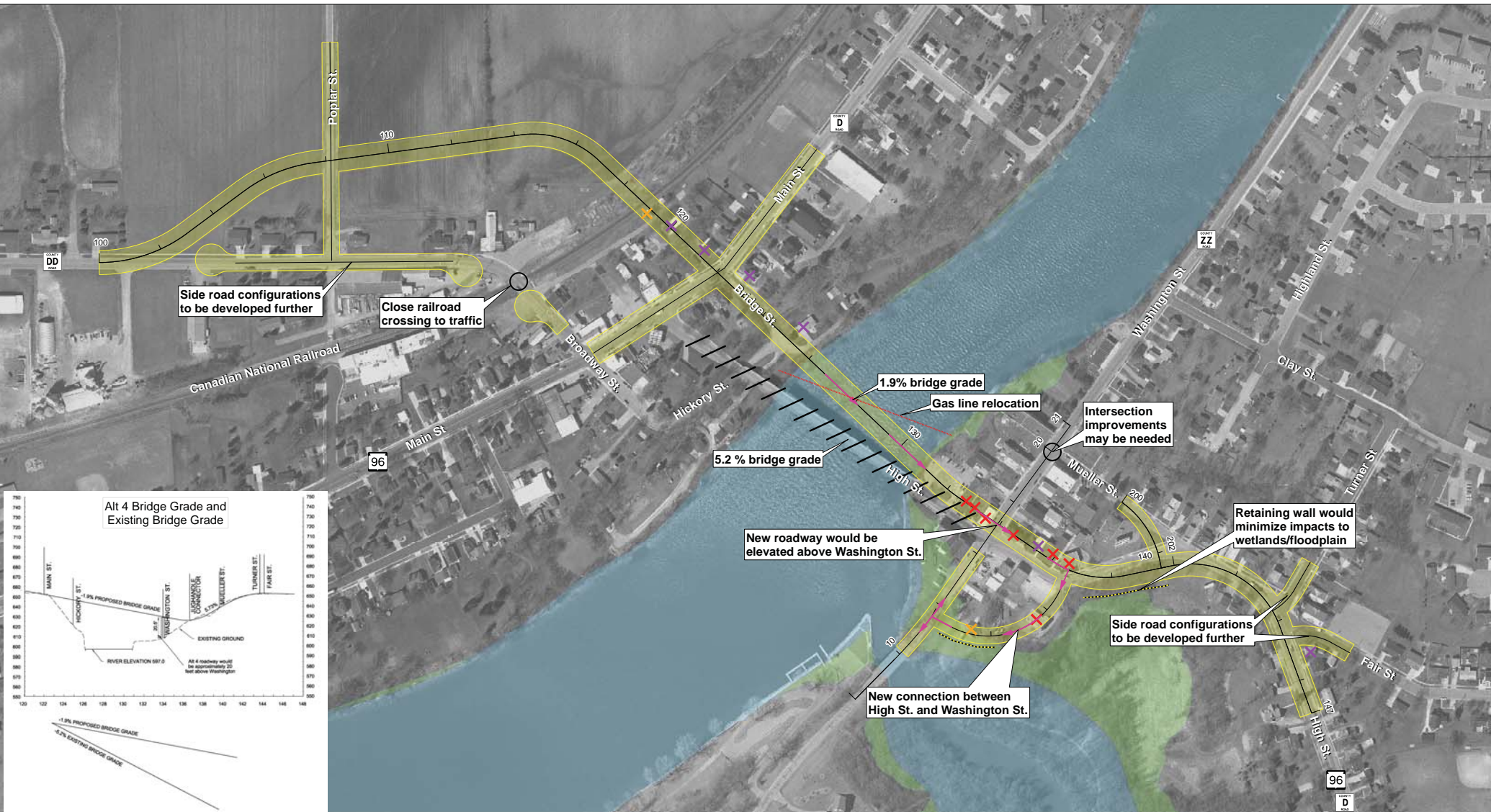
- Direction of travel to access Washington Street
- Potential Commercial Relocation
- Potential Outbuilding Relocation
- Potential Residential Relocation
- Proposed Roadway*
- Floodplain/Wetland
- Floodway
- Potential Retaining Wall

Note:

1. * The corridor shown depicts approximate route locations and is not intended to portray proposed right of way limits. The corridor width shown for the alternatives is approximate and may change as the study progresses.
2. Potential relocations associated with intersection improvements will be determined after tonight's meeting.

Remaining Alternatives
 Alternative 3 (Formerly 6B)
 At-Grade Intersection with Washington Street
 May 2009





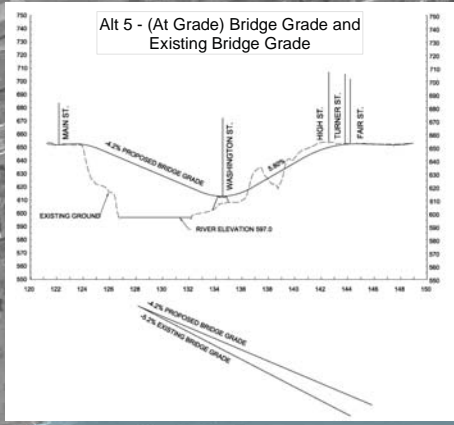
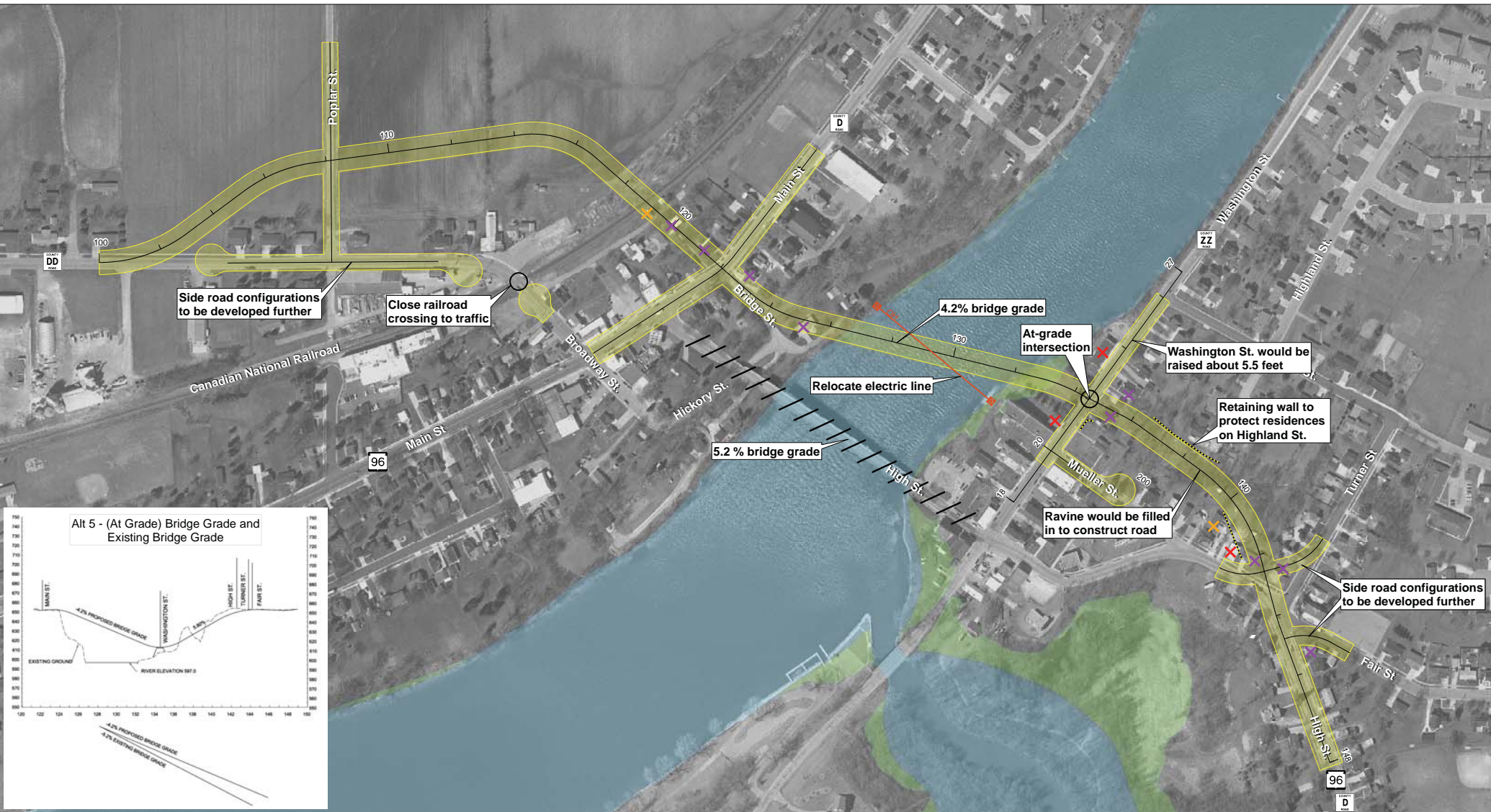
- Legend**
- Direction of travel to access Washington Street
 - Potential Commercial Relocation
 - Potential Outbuilding Relocation
 - Potential Residential Relocation
 - Proposed Roadway*
 - Floodplain/Wetland
 - Floodway
 - Potential Retaining Wall

Note:

1. * The corridor shown depicts approximate route locations and is not intended to portray proposed right of way limits. The corridor width shown for the alternatives is approximate and may change as the study progresses.
2. Potential relocations associated with intersection improvements will be determined after tonight's meeting.

Remaining Alternatives
 Alternative 4 (Formerly 9B)
 Bridge Over Washington Street
 May 2009





Legend

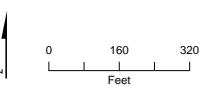
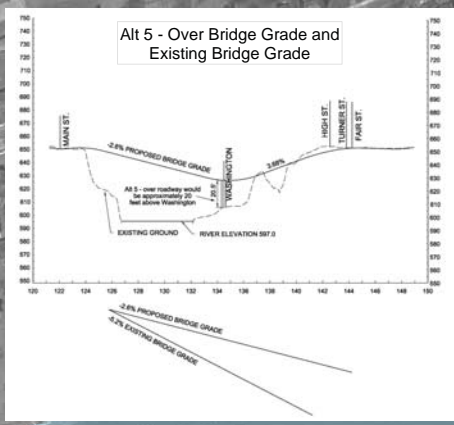
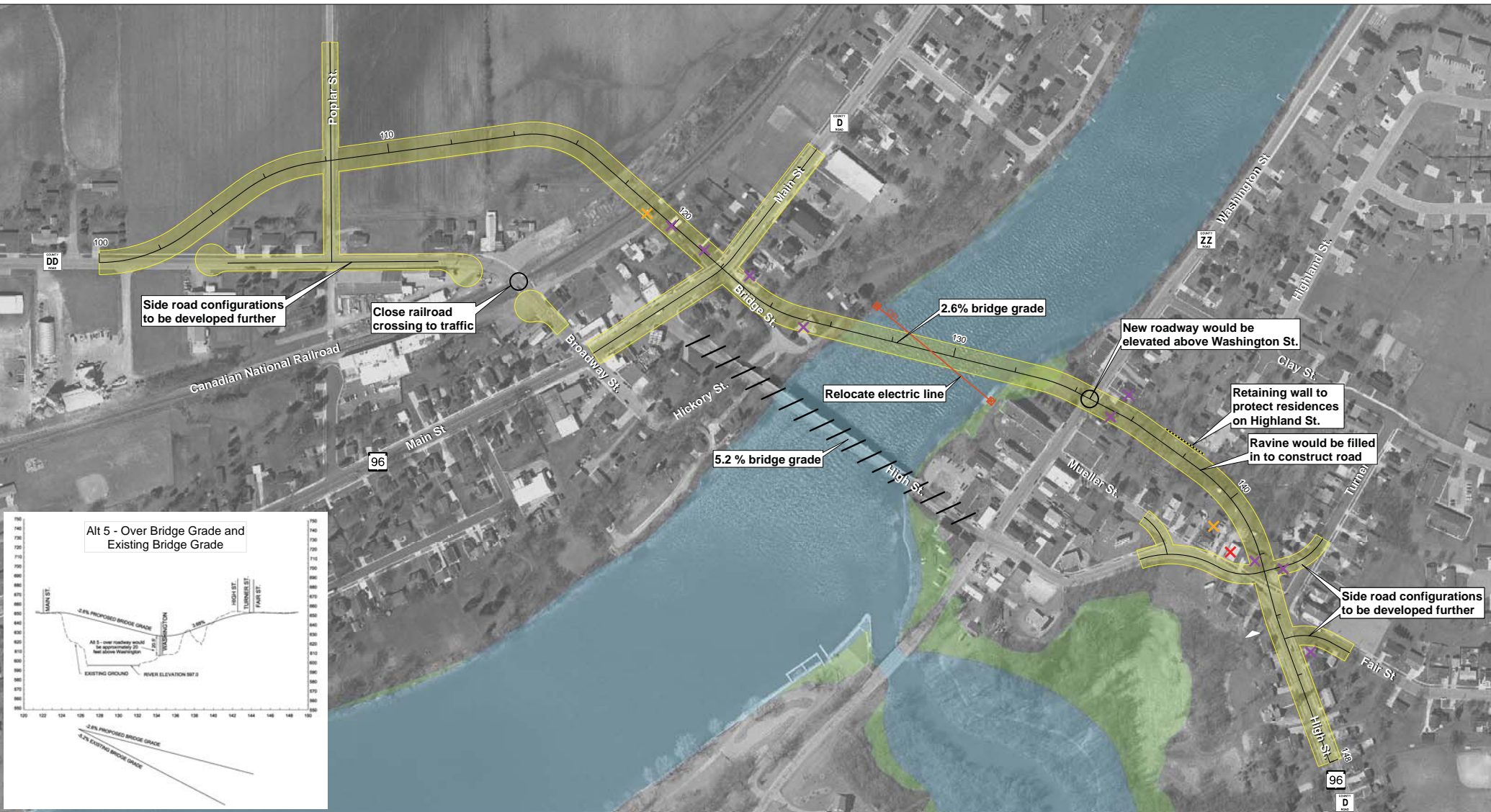
- Direction of travel to access Washington Street
- Potential Commercial Relocation
- Potential Outbuilding Relocation
- Potential Residential Relocation
- Proposed Roadway*
- Floodplain/Wetland
- Floodway
- Potential Retaining Wall

Note:

1. * The corridor shown depicts approximate route locations and is not intended to portray proposed right of way limits. The corridor width shown for the alternatives is approximate and may change as the study progresses.
2. Potential relocations associated with intersection improvements will be determined after tonight's meeting.

Remaining Alternatives
 Alternative 5 - At Grade
 At-Grade Intersection with Washington Street
 May 2009





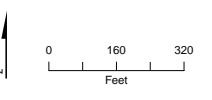
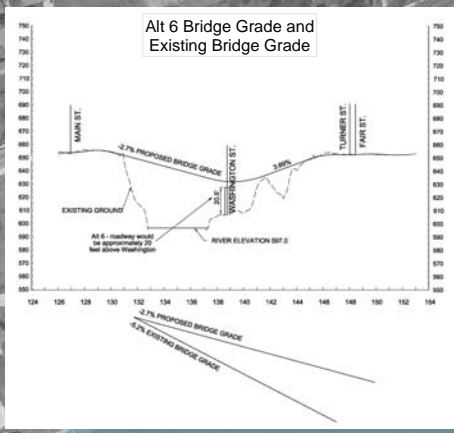
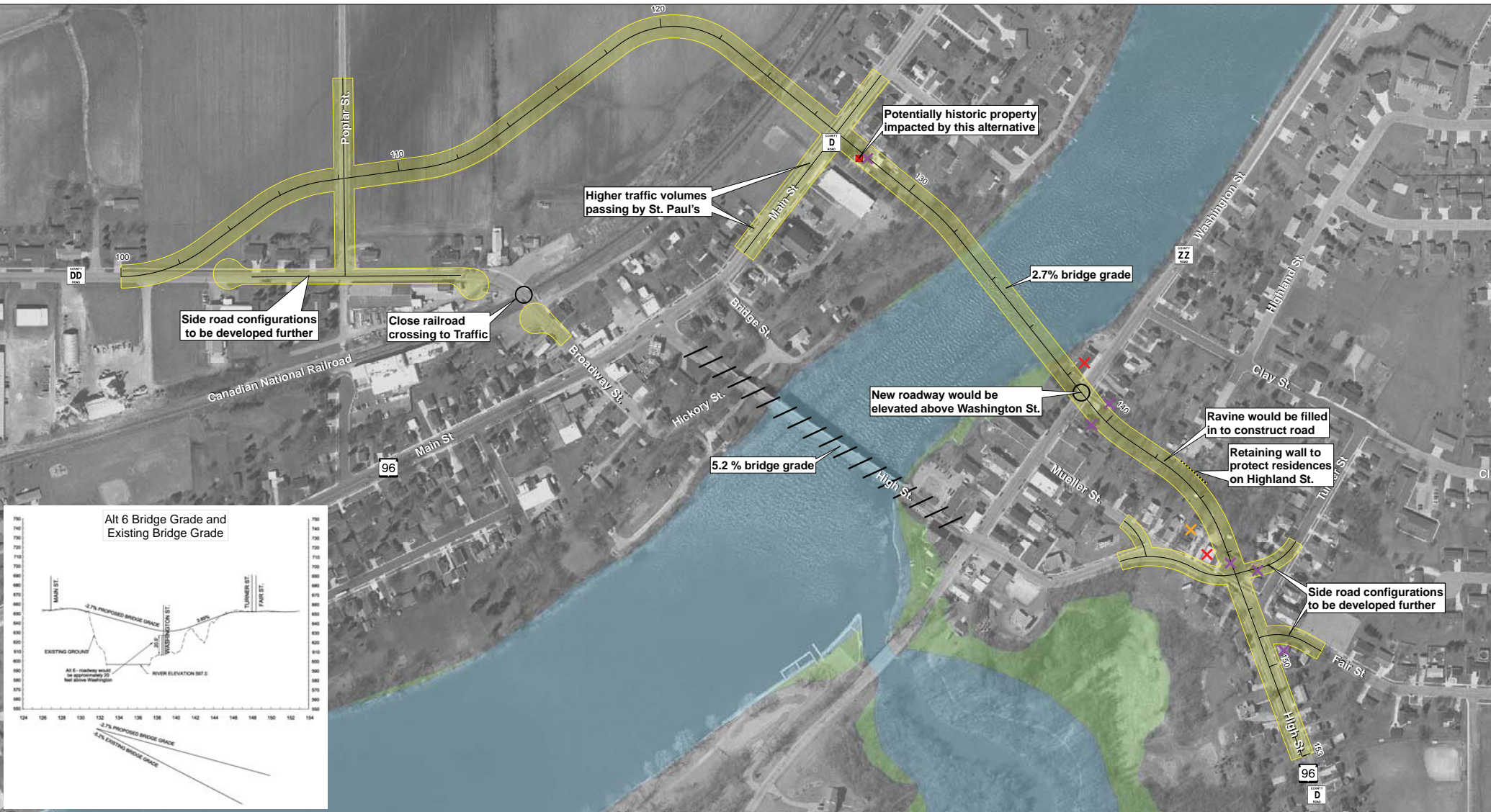
- Legend**
- ➔ Direction of travel to access Washington Street
 - ✗ Potential Commercial Relocation
 - ✗ Potential Outbuilding Relocation
 - ✗ Potential Residential Relocation
 - ▭ Proposed Roadway*
 - ▭ Floodplain/Wetland
 - ▭ Floodway
 - ⋯ Potential Retaining Wall

Note:

1. * The corridor shown depicts approximate route locations and is not intended to portray proposed right of way limits. The corridor width shown for the alternatives is approximate and may change as the study progresses.
2. Potential relocations associated with intersection improvements will be determined after tonight's meeting.

Remaining Alternatives
 Alternative 5 - Over
 Bridge Over Washington Street
 May 2009





- Legend**
- Direction of travel to access Washington Street
 - Potential Commercial Relocation
 - Potential Outbuilding Relocation
 - Potential Residential Relocation
 - Proposed Roadway*
 - Floodplain/Wetland
 - Floodway
 - Potential Retaining Wall

Note:

1. * The corridor shown depicts approximate route locations and is not intended to portray proposed right of way limits. The corridor width shown for the alternatives is approximate and may change as the study progresses.
2. Potential relocations associated with intersection improvements will be determined after tonight's meeting.

Remaining Alternatives
 Alternative 6
 Bridge Over Washington Street
 May 2009

